

TABULATION		
PART NO.	DESCRIPTION	GLOBAL FILTER MODEL NO.
21231-02	FLTR HSG ASSY, GMBE8306F SS SERIES, 304 SS	GMBE8306F415GB
21231-03	FLTR HSG ASSY, GMBE8306F SS SERIES, 316 SS	GMBE8306F615GB

- NOTES:**
1. ALL MODELS SHALL COMPLY WITH REQUIREMENTS OF TECHNICAL SPECIFICATION #TS-1023.
 2. UNLESS TOLERANCES ARE INDICATED, ALL DIMENSIONS ARE REFERENCE.

REFERENCE ENGINEERING DRAWING 21231

D	EC200824-01	MATERIAL	SEE TABULATION TABLE	
C	EC181226-01			
B	EC181211-01	FINISH	GLASS BEAD	
A	EC181004-01			
REV	EC NUMBER	DRAWN BY	NAME	DATE
	EC HISTORY	ENG APPR.	EG	10-26-18

GLOBAL FILTER LLC

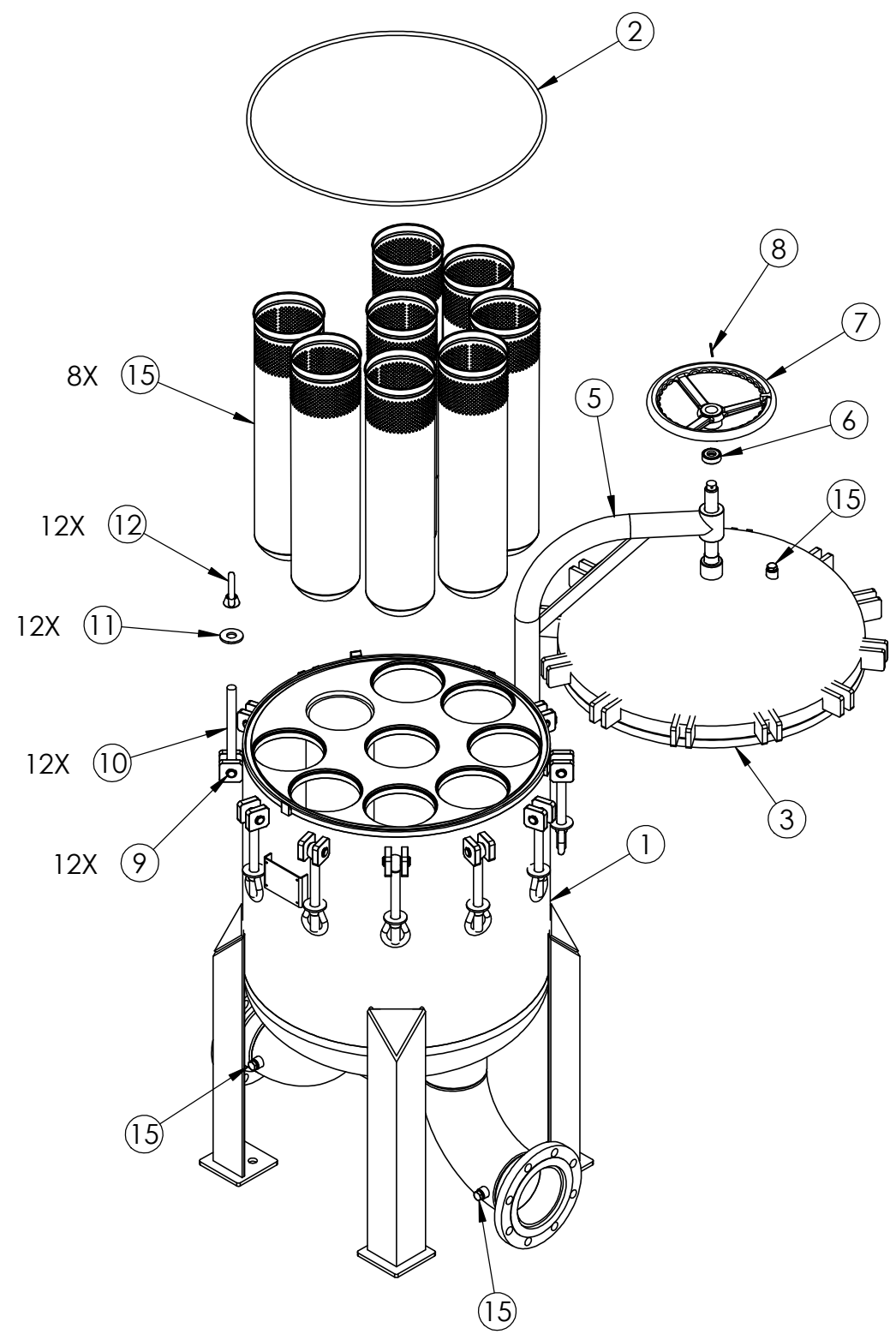
TITLE:
FLTR HSG ASSY, GMBE8306F
SS SERIES, TAB

SIZE DWG. NO. REV
B CS188 **D**

SCALE: 1:8 WEIGHT: 875 lbs SHEET 1 OF 3

PROPRIETARY AND CONFIDENTIAL
THE INFORMATION CONTAINED IN THIS DRAWING IS THE SOLE PROPERTY OF GLOBAL FILTER LLC. ANY REPRODUCTION IN PART OR AS A WHOLE WITHOUT THE WRITTEN PERMISSION OF GLOBAL FILTER LLC IS PROHIBITED.

D
C
B
A



△ D

△ C

△ C

D
C
B
A

BILL OF MATERIALS			
ITEM	DESCRIPTION	21231-xx	
		-02 QTY	-03 QTY
1	HSG WELDMENT, GMBE8306F SS SERIES, 304 SS	1	
	HSG WELDMENT, GMBE8306F SS SERIES, 316 SS		1
2	O-RING, METRIC 720 ID x 10 CS, NITRILE	1	1
3	LID WELDMENT, GMBE8306F SS SERIES, 304 SS	1	
	LID WELDMENT, GMBE8306F SS SERIES, 316 SS		1
4	THRUST WASHER, DAVIT ARM, 8 & 12 BAG	1	1
5	WLDMNT, DAVIT ARM, GMBE8306F SS SERIES, 304 SS	1	
	WLDMNT, DAVIT ARM, GMBE8306F SS SERIES, 316 SS		1
6	7/8" THRUST BEARING	1	1
7	HAND WHEEL, 12", DAVIT ARM	1	1
8	1/8" x 1-3/4" COTTER PIN	1	1
9	CLEVIS PIN w/ EXT. RETAINING RINGS KIT	12	12
10	EYE BOLT, 7/8"-9	12	12
11	FLAT WASHER, 7/8" x 2-1/4" OD	12	12
12	EYE NUT, 7/8"-9	12	12
13	BASKET, ROUND BOTTOM, SIZE 2, 304 SS	8	
	BASKET, ROUND BOTTOM, SIZE 2, 316 SS		8
14	PIPE PLUG, 2" NPT, 304 SS	1	
	PIPE PLUG, 2" NPT, 316 SS		1
15	PIPE PLUG, 1/2" NPT, 304 SS	3	
	PIPE PLUG, 1/2" NPT, 316 SS		3

SIZE B	DWG. NO. CS188	REV D
SCALE: 1:16	WEIGHT:	SHEET 2 OF 3

