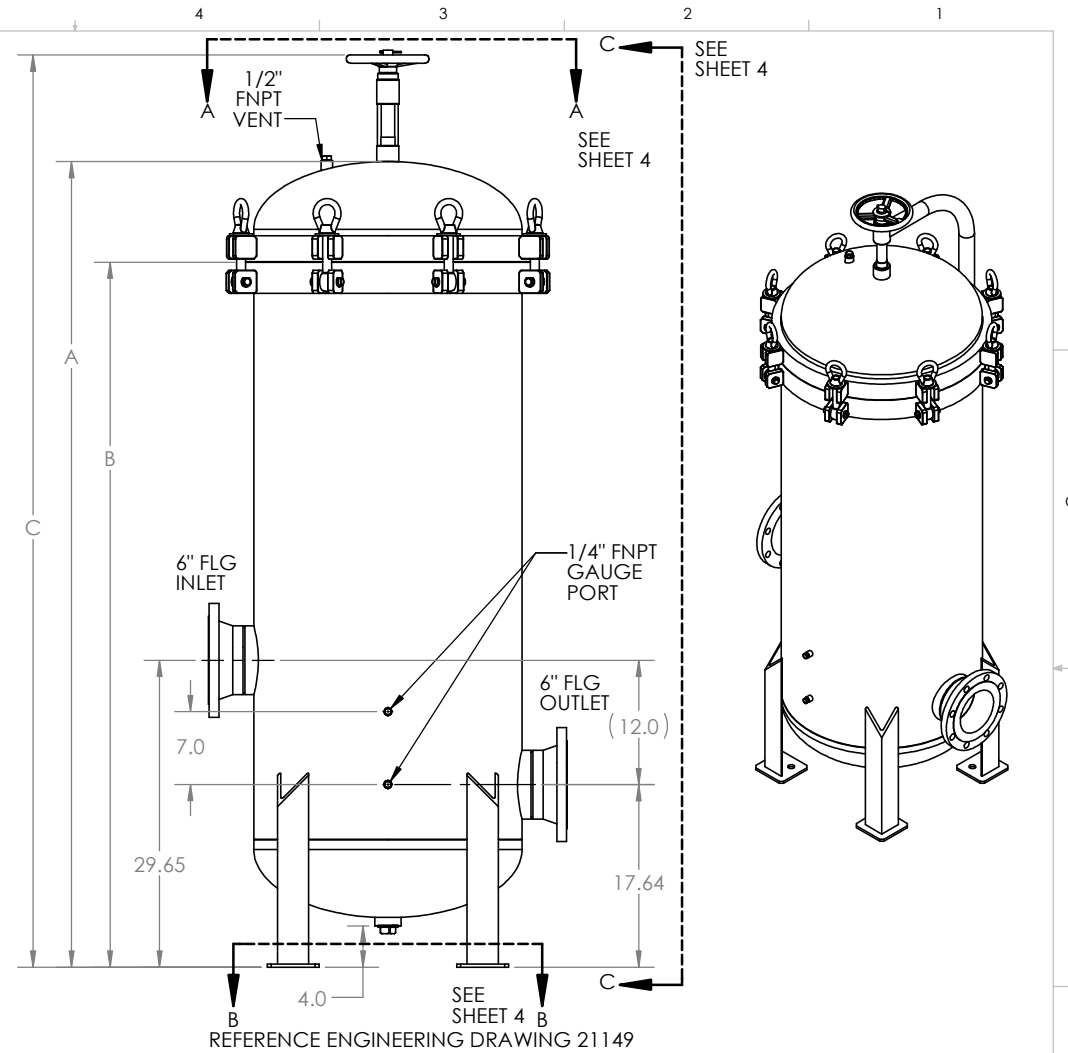


TABULATION		
PART NO.	DESCRIPTION	GLOBAL FILTER MODEL NO.
21149-03	FLTR HSG ASSY, GTCH51 SER, 30", 6F, 304 SS, GB, CODE	GTCH5136F2415GBU
21149-04	FLTR HSG ASSY, GTCH51 SER, 30", 6F, 304 SS, GB	GTCH5136F2415GB
21149-05	FLTR HSG ASSY, GTCH51 SER, 40", 6F, 304 SS, GB, CODE	GTCH5146F2415GBU
21149-06	FLTR HSG ASSY, GTCH51 SER, 40", 6F, 304 SS, GB	GTCH5146F2415GB
21149-09	FLTR HSG ASSY, GTCH51 SER, 30", 6F, 316L SS, GB, CODE	GTCH5136F2615GBU
21149-10	FLTR HSG ASSY, GTCH51 SER, 30", 6F, 316L SS, GB	GTCH5136F2615GB
21149-11	FLTR HSG ASSY, GTCH51 SER, 40", 6F, 316L SS, GB, CODE	GTCH5146F2615GBU
21149-12	FLTR HSG ASSY, GTCH51 SER, 40", 6F, 316L SS, GB	GTCH5146F2615GB

DIMENSIONS			
MODEL NO.	A in.	B in.	C in.
GTCH513-	68.3	58.1	78.1
GTCH514-	78.3	68.1	88.1



- NOTES:
- UNLESS TOLERANCES ARE INDICATED, ALL DIMENSIONS ARE REFERENCE.
 - SEE SHEETS 2 AND 3 FOR BILL OF MATERIALS.
 - ALL MODELS COMPLY WITH REQUIREMENTS FOR DESIGN AND CONSTRUCTION IN ACCORDANCE WITH THE ASME BOILER & PRESSURE VESSEL CODE, SECTION VIII, DIVISION 1. MODELS BEARING THE "U" OR "UM" STAMP ARE REGISTERED WITH THE NATIONAL BOARD OF BOILER AND PRESSURE VESSEL INSPECTORS.

PROPRIETARY AND CONFIDENTIAL
 THE INFORMATION CONTAINED IN THIS DRAWING IS THE SOLE PROPERTY OF GLOBAL FILTER LLC. ANY REPRODUCTION IN PART OR AS A WHOLE WITHOUT THE WRITTEN PERMISSION OF GLOBAL FILTER LLC IS PROHIBITED.

EC HISTORY		MATERIAL	
C	EC210714-01	SEE TABULATION TABLE	
B	EC161118-01	SEE TABULATION TABLE	
A	EC150219-02	SEE TABULATION TABLE	
EC NUMBER		NAME	DATE
DRAWN BY		ME	3-5-15
ENG APPR.		EG	3-9-15

GLOBAL FILTER LLC		
TITLE: FLTR HSG ASSY, 6" FLG SISO GTCH51 SER, TAB		
SIZE	DWG. NO.	REV
B	CS104	C
SCALE: 1:12	WEIGHT:	SHEET 1 OF 5

BILL OF MATERIALS

ITEM	DESCRIPTION	21149-xx																							
		-01 QTY	-02 QTY	-03 QTY	-04 QTY	-05 QTY	-06 QTY	-07 QTY	-08 QTY	-09 QTY	-10 QTY	-11 QTY	-12 QTY	-13 QTY	-14 QTY	-15 QTY	-16 QTY	-17 QTY	-18 QTY	-19 QTY	-20 QTY	-21 QTY	-22 QTY	-23 QTY	-24 QTY
D 1	FLTR HSG WLDMNT, 6" FLG SISO GTCH51 SER, 20" 304 SS	1	1											1	1										
	FLTR HSG WLDMNT, 6" FLG SISO GTCH51 SER, 30" 304 SS			1	1										1	1									
	FLTR HSG WLDMNT, 6" FLG SISO GTCH51 SER, 40" 304 SS					1	1											1	1						
	FLTR HSG WLDMNT, 6" FLG SISO GTCH51 SER, 20" 316L SS							1	1											1	1				
	FLTR HSG WLDMNT, 6" FLG SISO GTCH51 SER, 30" 316L SS									1	1											1	1		
	FLTR HSG WLDMNT, 6" FLG SISO GTCH51 SER, 40" 316L SS											1	1										1	1	
2	O-RING, METRIC 665 ID X 9 CS, NITRILE	1	1	1	1	1	1	1	1	1	1	1	1	1	1	1	1	1	1	1	1	1	1	1	1
3	LID WELDMENT, GTCH51 SERIES, 304 SS	1	1	1	1	1	1							1	1	1	1	1							
	LID WELDMENT, GTCH51 SERIES, 316L SS							1	1	1	1	1	1							1	1	1	1	1	1
4	KIT, CLEVIS PEN w/ RETAINING RINGS, .63 x 2.125"	8	8	8	8	8	8	8	8	8	8	8	8	8	8	8	8	8	8	8	8	8	8	8	8
5	EYE BOLT, 7/8"-9	8	8	8	8	8	8	8	8	8	8	8	8	8	8	8	8	8	8	8	8	8	8	8	8
6	WASHER, 7/8" FLAT, SS	9	9	9	9	9	9	9	9	9	9	9	9	9	9	9	9	9	9	9	9	9	9	9	9
7	EYE NUT, 7/8"-9	8	8	8	8	8	8	8	8	8	8	8	8	8	8	8	8	8	8	8	8	8	8	8	8
C 8	THRUST WASHER, DAVIT ARM, GTCH51	1	1	1	1	1	1	1	1	1	1	1	1	1	1	1	1	1	1	1	1	1	1	1	1
9	WLDMNT, DAVIT ARM TUBE, GTCH51, 304 SS	1	1	1	1	1	1							1	1	1	1	1							
	WLDMNT, DAVIT ARM TUBE, GTCH51, 316L SS							1	1	1	1	1	1							1	1	1	1	1	1
10	1" THRUST BEARING	1	1	1	1	1	1	1	1	1	1	1	1	1	1	1	1	1	1	1	1	1	1	1	1
11	HAND WHEEL, 12", DAVIT ARM	1	1	1	1	1	1	1	1	1	1	1	1	1	1	1	1	1	1	1	1	1	1	1	1
12	1/8" x 1.75" LONG COTTER PIN	1	1	1	1	1	1	1	1	1	1	1	1	1	1	1	1	1	1	1	1	1	1	1	1
14	TIE ROD, GTCH SERIES, 20", 304 SS	17	17												17	17									
	TIE ROD, GTCH SERIES, 30", 304 SS			17	17												17	17							
	TIE ROD, GTCH SERIES, 40", 304 SS					17	17												17	17					
	TIE ROD, GTCH SERIES, 20", 316L SS							17	17												17	17			
	TIE ROD, GTCH SERIES, 30", 316L SS									17	17												17	17	
	TIE ROD, GTCH SERIES, 40", 316L SS											17	17											17	17
B 15	V-POST, GTCH & GTCHB SERIES, 20", 304 SS	51	51											51	51										
	V-POST, GTCH & GTCHB SERIES, 30", 304 SS			51	51											51	51								
	V-POST, GTCH & GTCHB SERIES, 40", 304 SS					51	51											51	51						
	V-POST, GTCH & GTCHB SERIES, 20", 316L SS							51	51											51	51				
	V-POST, GTCH & GTCHB SERIES, 30", 316L SS									51	51											51	51		
	V-POST, GTCH & GTCHB SERIES, 40", 316L SS											51	51											51	51
16	HOLD DOWN PLT POST w/ EXT RET RINGS KIT, 304 SS	17	17	17	17	17	17							17	17	17	17	17	17						
	HOLD DOWN PLT POST w/ EXT RET RINGS KIT, 316L SS							17	17	17	17	17	17								17	17	17	17	17
17	HOLD DOWN PLT, CLOSED & DOE, GTCH12-51 SER, 304 SS	17	17	17	17	17	17							17	17	17	17	17	17						
	HOLD DOWN PLT, CLOSED & DOE, GTCH12-51 SER, 316L SS							17	17	17	17	17	17								17	17	17	17	17
18	HOLD DOWN FIN CTG, GTCH12-51 SER, 304 SS	17	17	17	17	17	17							17	17	17	17	17	17						
	HOLD DOWN FIN CTG, GTCH12-51 SER, 316L SS							17	17	17	17	17	17								17	17	17	17	17
19	SPRING ASSEMBLY, CARTRIDGE VESSELS, 304 SS	51	51	51	51	51	51							51	51	51	51	51	51						
	SPRING ASSEMBLY, CARTRIDGE VESSELS, 316L SS							51	51	51	51	51	51								51	51	51	51	51

SIZE B	DWG. NO. CS104	REV C
SCALE: 1:24	WEIGHT:	SHEET 2 OF 5

BILL OF MATERIALS

ITEM	DESCRIPTION	21149-xx																							
		-01 QTY	-02 QTY	-03 QTY	-04 QTY	-05 QTY	-06 QTY	-07 QTY	-08 QTY	-09 QTY	-10 QTY	-11 QTY	-12 QTY	-13 QTY	-14 QTY	-15 QTY	-16 QTY	-17 QTY	-18 QTY	-19 QTY	-20 QTY	-21 QTY	-22 QTY	-23 QTY	-24 QTY
20	TIE ROD NUT, GTCHB SERIES, 304 SS	17	17	17	17	17	17																		
	TIE ROD NUT, GTCHB SERIES, 316L SS							17	17	17	17	17	17							17	17	17	17	17	17
21	PIPE PLUG, 1-1/2" HEX HEAD, 304 SS	2	2	2	2	2	2							2	2	2	2	2	2						
	PIPE PLUG, 1-1/2" HEX HEAD, 316L SS							2	2	2	2	2	2							2	2	2	2	2	2
22	PIPE PLUG, 1/2" HEX HEAD, 304 SS	1	1	1	1	1	1							1	1	1	1	1	1						
	PIPE PLUG, 1/2" HEX HEAD, 316L SS							1	1	1	1	1	1							1	1	1	1	1	1
23	PIPE PLUG, 1/4" HEX HEAD, 304 SS	2	2	2	2	2	2							2	2	2	2	2	2						
	PIPE PLUG, 1/4" HEX HEAD, 316L SS							2	2	2	2	2	2							2	2	2	2	2	2

D

D

C

C

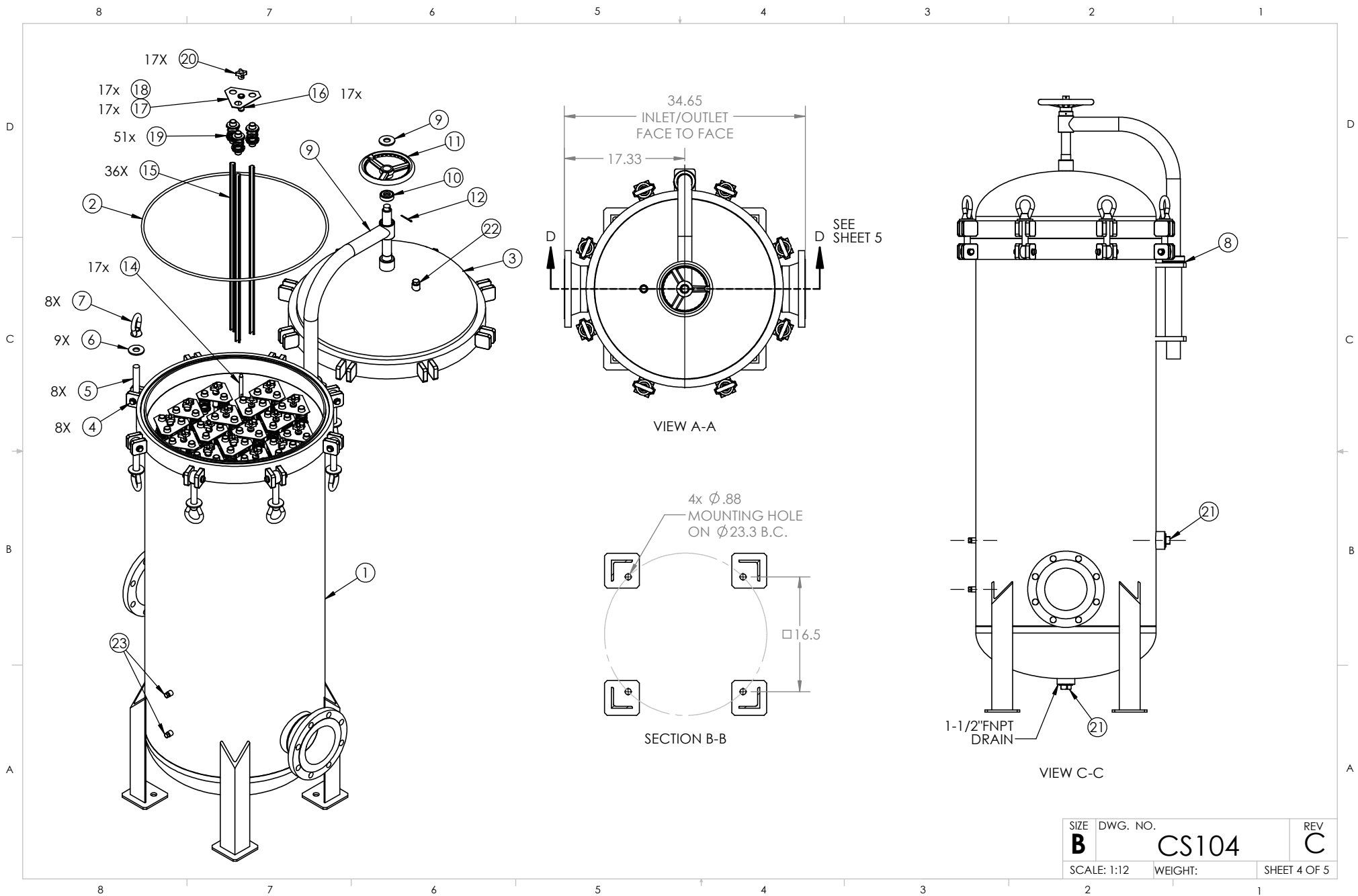
B

B

A

A

SIZE B	DWG. NO. CS104	REV C
SCALE: 1:24	WEIGHT:	SHEET 3 OF 5



SIZE	DWG. NO.	REV
B	CS104	C
SCALE: 1:12	WEIGHT:	SHEET 4 OF 5

8 7 6 5 4 3 2 1

D

D

C

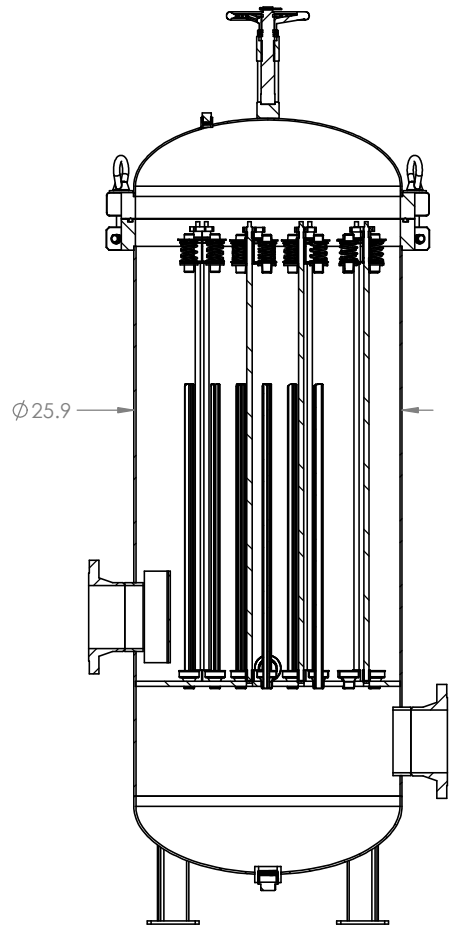
C

B

B

A

A



SECTION D-D

SIZE B	DWG. NO. CS104	REV C
SCALE: 1:12	WEIGHT:	SHEET 5 OF 5

8 7 6 5 4 3 2 1