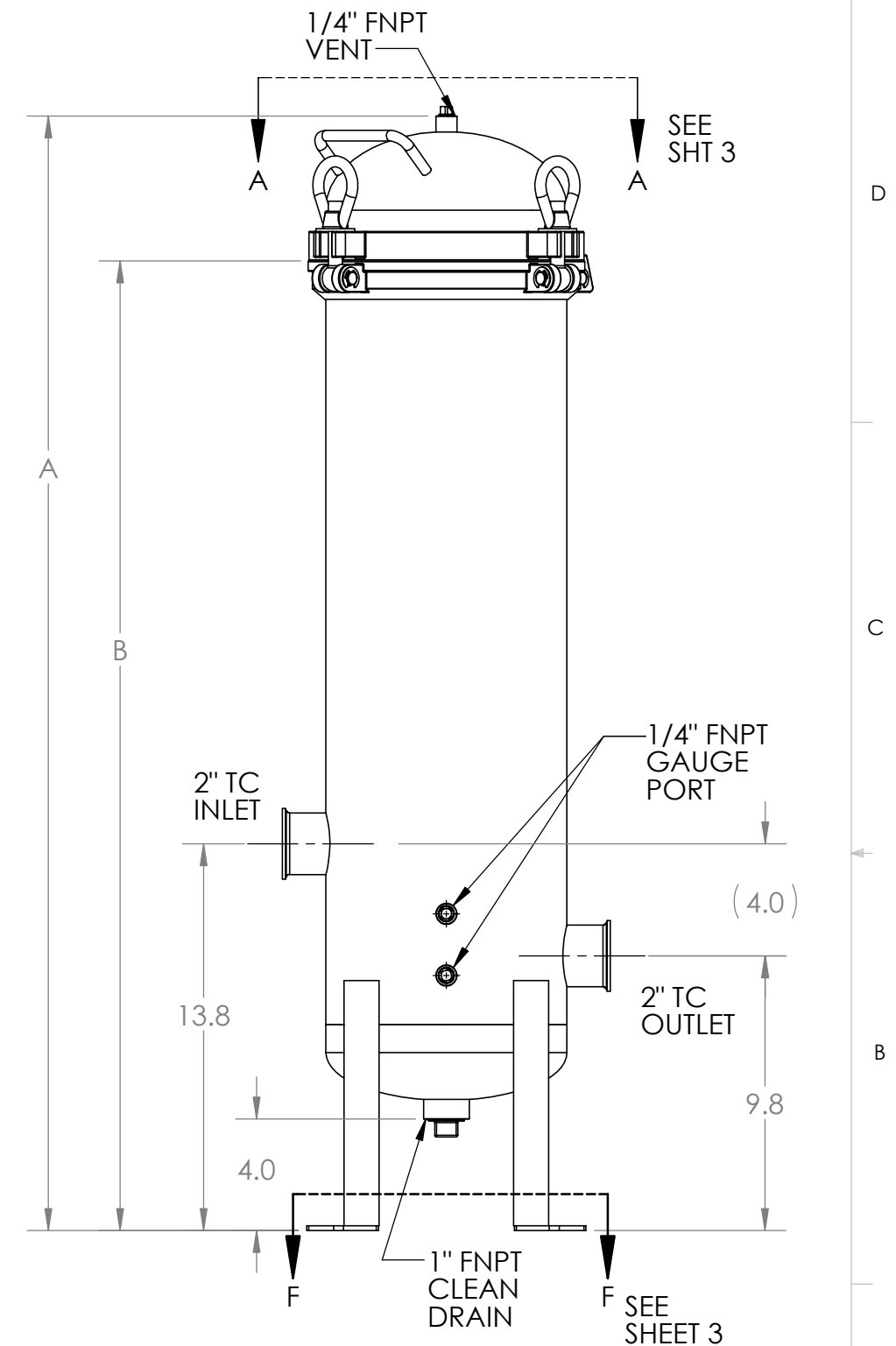
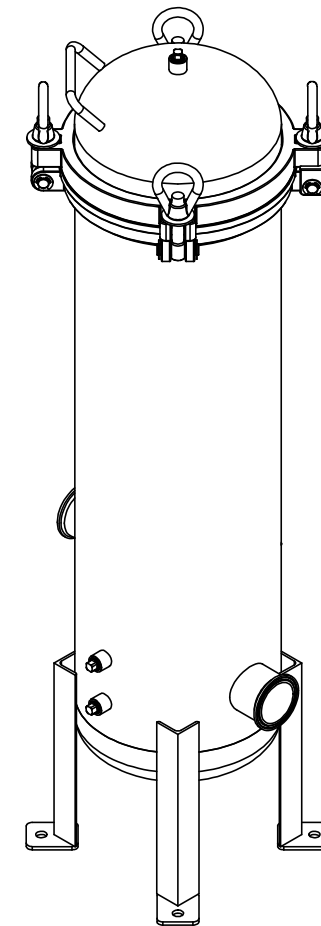


TABULATION			
PART NO.	DESCRIPTION	GLOBAL FILTER MODEL NO.	GLOBAL FILTER ERP NO.
21059-01	FLTR HSG ASSY, GTCH5 SER, 20", 2T, 304 SS, GB, CODE	GTCH522T2415GBU	
21059-02	FLTR HSG ASSY, GTCH5 SER, 20", 2T, 304 SS, GB	GTCH522T2415GB	
21059-03	FLTR HSG ASSY, GTCH5 SER, 30", 2T, 304 SS, GB, CODE	GTCH532T2415GBU	
21059-04	FLTR HSG ASSY, GTCH5 SER, 30", 2T, 304 SS, GB	GTCH532T2415GB	
21059-05	FLTR HSG ASSY, GTCH5 SER, 40", 2T, 304 SS, GB, CODE	GTCH542T2415GBU	
21059-06	FLTR HSG ASSY, GTCH5 SER, 40", 2T, 304 SS, GB	GTCH542T2415GB	
21059-07	FLTR HSG ASSY, GTCH5 SER, 20", 2T, 316 SS, GB, CODE	GTCH522T2615GBU	
21059-08	FLTR HSG ASSY, GTCH5 SER, 20", 2T, 316 SS, GB	GTCH522T2615GB	
21059-09	FLTR HSG ASSY, GTCH5 SER, 30", 2T, 316 SS, GB, CODE	GTCH532T2615GBU	
21059-10	FLTR HSG ASSY, GTCH5 SER, 30", 2T, 316 SS, GB	GTCH532T2615GB	
21059-11	FLTR HSG ASSY, GTCH5 SER, 40", 2T, 316 SS, GB, CODE	GTCH542T2615GBU	
21059-12	FLTR HSG ASSY, GTCH5 SER, 40", 2T, 316 SS, GB	GTCH542T2615GB	
21059-13	FLTR HSG ASSY, GTCH5 SER, 20", 2T, 304 SS, EP, CODE	GTCH522T2415EPU	
21059-14	FLTR HSG ASSY, GTCH5 SER, 20", 2T, 304 SS, EP	GTCH522T2415EP	
21059-15	FLTR HSG ASSY, GTCH5 SER, 30", 2T, 304 SS, EP, CODE	GTCH532T2415EPU	
21059-16	FLTR HSG ASSY, GTCH5 SER, 30", 2T, 304 SS, EP	GTCH532T2415EP	
21059-17	FLTR HSG ASSY, GTCH5 SER, 40", 2T, 304 SS, EP, CODE	GTCH542T2415EPU	
21059-18	FLTR HSG ASSY, GTCH5 SER, 40", 2T, 304 SS, EP	GTCH542T2415EP	
21059-19	FLTR HSG ASSY, GTCH5 SER, 20", 2T, 316 SS, EP, CODE	GTCH522T2615EPU	
21059-20	FLTR HSG ASSY, GTCH5 SER, 20", 2T, 316 SS, EP	GTCH522T2615EP	
21059-21	FLTR HSG ASSY, GTCH5 SER, 30", 2T, 316 SS, EP, CODE	GTCH532T2615EPU	
21059-22	FLTR HSG ASSY, GTCH5 SER, 30", 2T, 316 SS, EP	GTCH532T2615EP	
21059-23	FLTR HSG ASSY, GTCH5 SER, 40", 2T, 316 SS, EP, CODE	GTCH542T2615EPU	
21059-24	FLTR HSG ASSY, GTCH5 SER, 40", 2T, 316 SS, EP	GTCH542T2615EP	

SHIPPING WEIGHT AND SIZE MAY DIFFER FROM STATED VALUES DUE TO PALLETIZING AND QUANTITY CONSIDERATIONS		
VESSEL SIZE	BOXED WEIGHT (LBS)	BOX SIZE (INCHES)
GTCH52-		14 x 14 x 40
GTCH53-		14 x 14 x 50
GTCH54-		14 x 14 x 60

DIMENSIONS		
MODEL NO.	A (in)	B (in)
GTCH52-	38	34.6
GTCH53-	48	44.6
GTCH54-	58	54.6



- NOTES:
- SEE SHEET 2 FOR BILL OF MATERIALS.
  - ALL MODELS COMPLY WITH REQUIREMENTS FOR DESIGN AND CONSTRUCTION IN ACCORDANCE WITH THE ASME BOILER & PRESSURE VESSEL CODE, SECTION VIII, DIVISION 1. MODELS BEARING THE "U" OR "UM" STAMP ARE REGISTERED WITH THE NATIONAL BOARD OF BOILER AND PRESSURE VESSEL INSPECTORS.

**PROPRIETARY AND CONFIDENTIAL**  
 THE INFORMATION CONTAINED IN THIS DRAWING IS THE SOLE PROPERTY OF GLOBAL FILTER LLC. ANY REPRODUCTION IN PART OR AS A WHOLE WITHOUT THE WRITTEN PERMISSION OF GLOBAL FILTER LLC IS PROHIBITED.

REFERENCE ENGINEERING DRAWING 21059

		DIMENSIONS ARE IN INCHES TOLERANCES: ANGULAR ± 0.5° X.X ± .060 X.XX ± .015 X.XXX ± .005		<b>GLOBAL FILTER LLC</b>	
		MATERIAL SEE TABULATION TABLE			
B	EC200325-02	FINISH SEE TABULATION TABLE		TITLE: FLTR HSG ASSY, 2" TC SISO GTCH5 SER, TAB	
A	EC130503-02	DRAWN BY: ME DATE: 4-30-13		SIZE: <b>B</b>	DWG. NO.: <b>CS019</b>
REV	EC NUMBER	ENG APPR.: GA DATE: 5-6-13		SCALE: 1:6	WEIGHT: 60 lbs.
EC HISTORY				SHEET 1 OF 3	REV <b>B</b>

8 7 6 5 4 3 2 1

8 7 6 5 4 3 2 1

BILL OF MATERIALS

ITEM	DESCRIPTION	21059-xx																							
		-01 QTY	-02 QTY	-03 QTY	-04 QTY	-05 QTY	-06 QTY	-07 QTY	-08 QTY	-09 QTY	-10 QTY	-11 QTY	-12 QTY	-13 QTY	-14 QTY	-15 QTY	-16 QTY	-17 QTY	-18 QTY	-19 QTY	-20 QTY	-21 QTY	-22 QTY	-23 QTY	-24 QTY
D 1	FLTR HSG WLDMNT, 2" TC SISO GTCH5 SER, 20" 304 SS	1	1											1	1										
	FLTR HSG WLDMNT, 2" TC SISO GTCH5 SER, 30" 304 SS			1	1											1	1								
	FLTR HSG WLDMNT, 2" TC SISO GTCH5 SER, 40" 304 SS					1	1											1	1						
	FLTR HSG WLDMNT, 2" TC SISO GTCH5 SER, 20" 316 SS							1	1											1	1				
	FLTR HSG WLDMNT, 2" TC SISO GTCH5 SER, 30" 316 SS									1	1											1	1		
	FLTR HSG WLDMNT, 2" TC SISO GTCH5 SER, 40" 316 SS											1	1											1	1
2	O-RING, METRIC 224 ID X 7 CS, NITRILE	1	1	1	1	1	1	1	1	1	1	1	1	1	1	1	1	1	1	1	1	1	1	1	
3	LID WELDMENT, GTCH5 SERIES, 304 SS	1	1	1	1	1	1							1	1	1	1	1	1						
	LID WELDMENT, GTCH5 SERIES, 316 SS							1	1	1	1	1	1							1	1	1	1	1	
4	KIT, CLEVIS PEN w/ RETAINING RINGS, 15/32 x 1.75"	2	2	2	2	2	2	2	2	2	2	2	2	2	2	2	2	2	2	2	2	2	2	2	
5	EYE BOLT, 5/8"	4	4	4	4	4	4	4	4	4	4	4	4	4	4	4	4	4	4	4	4	4	4	4	
6	WASHER, FLAT, SS	4	4	4	4	4	4	4	4	4	4	4	4	4	4	4	4	4	4	4	4	4	4	4	
7	EYE NUT, 5/8"-11	4	4	4	4	4	4	4	4	4	4	4	4	4	4	4	4	4	4	4	4	4	4	4	
C 8	V-POST, GTCHB SERIES, 20", 304 SS	5	5											5	5										
	V-POST, GTCHB SERIES, 30", 304 SS			5	5											5	5								
	V-POST, GTCHB SERIES, 40", 304 SS					5	5											5	5						
	V-POST, GTCHB SERIES, 20", 316 SS							5	5											5	5				
	V-POST, GTCHB SERIES, 30", 316 SS									5	5											5	5		
	V-POST, GTCHB SERIES, 40", 316 SS											5	5										5	5	
9	TIE ROD, GTCH SERIES, 20", 304 SS	1	1											1	1										
	TIE ROD, GTCH SERIES, 30", 304 SS			1	1											1	1								
	TIE ROD, GTCH SERIES, 40", 304 SS					1	1											1	1						
	TIE ROD, GTCH SERIES, 20", 316 SS							1	1											1	1				
	TIE ROD, GTCH SERIES, 30", 316 SS									1	1											1	1		
	TIE ROD, GTCH SERIES, 40", 316 SS											1	1										1	1	
B 10	SPRING ASSEMBLY, CARTRIDGE VESSELS, 304 SS	5	5	5	5	5	5							5	5	5	5	5	5						
	SPRING ASSEMBLY, CARTRIDGE VESSELS, 316 SS							5	5	5	5	5	5							5	5	5	5	5	
11	HOLD DOWN PLT POST w/ EXT RET RINGS KIT, 304 SS	1	1	1	1	1	1							1	1	1	1	1	1						
	HOLD DOWN PLT POST w/ EXT RET RINGS KIT, 316 SS							1	1	1	1	1	1							1	1	1	1	1	
12	HOLD DOWN PLT, CLOSED & DOE, GTCH5 SER, 304 SS	1	1	1	1	1	1							1	1	1	1	1	1						
	HOLD DOWN PLT, CLOSED & DOE, GTCH5 SER, 316 SS							1	1	1	1	1	1							1	1	1	1	1	
13	HOLD DOWN FIN CTG, GTCH5 SER, 304 SS	1	1	1	1	1	1							1	1	1	1	1	1						
	HOLD DOWN FIN CTG, GTCH5 SER, 316 SS							1	1	1	1	1	1							1	1	1	1	1	
14	TIE ROD NUT, GTCHB SERIES, 304 SS	1	1	1	1	1	1							1	1	1	1	1	1						
	TIE ROD NUT, GTCHB SERIES, 316 SS							1	1	1	1	1	1							1	1	1	1	1	
15	PIPE PLUG, 1" HEX HEAD, 304 SS	2	2	2	2	2	2							2	2	2	2	2	2						
	PIPE PLUG, 1" HEX HEAD, 316 SS							2	2	2	2	2	2							2	2	2	2	2	
16	PIPE PLUG, 1/4" HEX HEAD, 304 SS	3	3	3	3	3	3							3	3	3	3	3	3						
	PIPE PLUG, 1/4" HEX HEAD, 316 SS							3	3	3	3	3	3							3	3	3	3	3	
A 17	KIT, CLEVIS PEN w/ RETAINING RINGS, 15-32 x 2.50"	1	1	1	1	1	1	1	1	1	1	1	1	1	1	1	1	1	1	1	1	1	1	1	

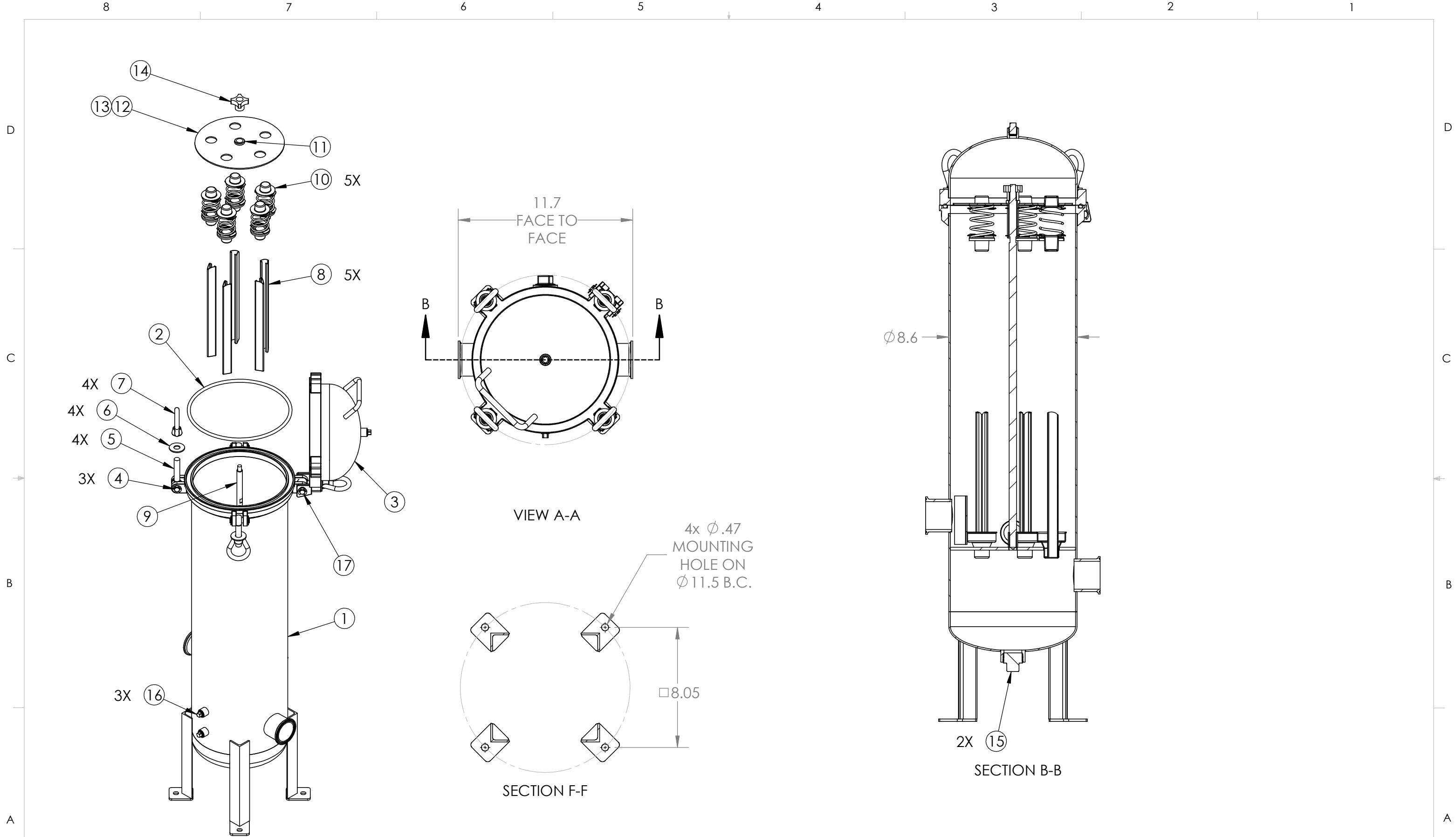
D

C

B

A

SIZE <b>B</b>	DWG. NO. <b>CS019</b>	REV <b>B</b>
SCALE: 1:1	WEIGHT:	SHEET 2 OF 3



SCALE 1 : 6

SIZE <b>B</b>	DWG. NO. <b>CS019</b>	REV <b>B</b>
SCALE: 1:6	WEIGHT:	SHEET 3 OF 3