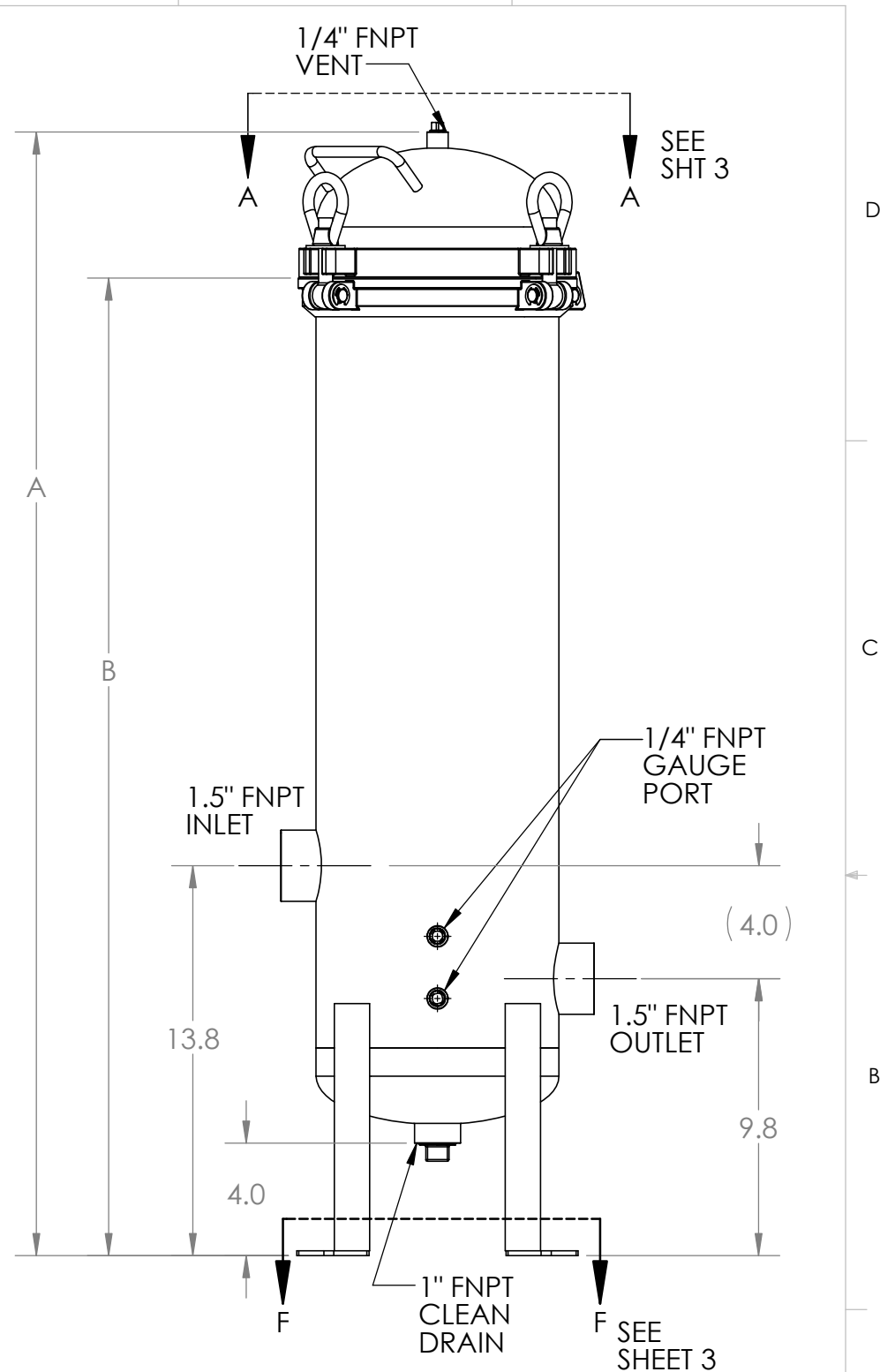
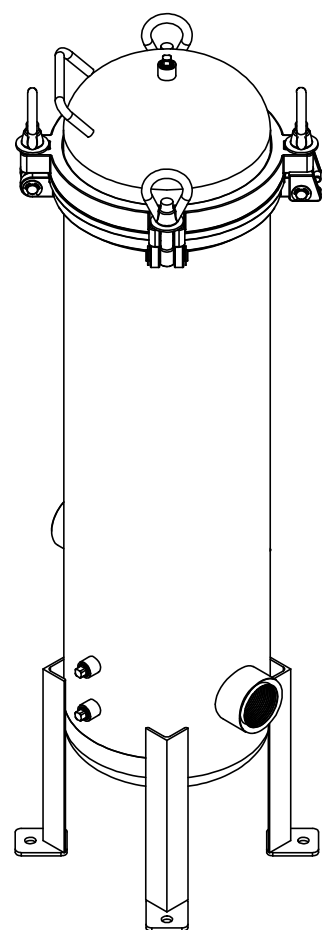


TABULATION		
PART NO.	DESCRIPTION	GLOBAL FILTER MODEL NO.
21262-01	FLTR HSG ASSY, GTCH5 SER, 20", 1.5N, 304 SS, GB, CODE	GTCH521.5N2415GBU
21262-02	FLTR HSG ASSY, GTCH5 SER, 20", 1.5N, 304 SS, GB	GTCH521.5N2415GB
21262-03	FLTR HSG ASSY, GTCH5 SER, 30", 1.5N, 304 SS, GB, CODE	GTCH531.5N2415GBU
21262-04	FLTR HSG ASSY, GTCH5 SER, 30", 1.5N, 304 SS, GB	GTCH531.5N2415GB
21262-05	FLTR HSG ASSY, GTCH5 SER, 40", 1.5N, 304 SS, GB, CODE	GTCH541.5N2415GBU
21262-06	FLTR HSG ASSY, GTCH5 SER, 40", 1.5N, 304 SS, GB	GTCH541.5N2415GB
21262-07	FLTR HSG ASSY, GTCH5 SER, 20", 1.5N, 316 SS, GB, CODE	GTCH521.5N2615GBU
21262-08	FLTR HSG ASSY, GTCH5 SER, 20", 1.5N, 316 SS, GB	GTCH521.5N2615GB
21262-09	FLTR HSG ASSY, GTCH5 SER, 30", 1.5N, 316 SS, GB, CODE	GTCH531.5N2615GBU
21262-10	FLTR HSG ASSY, GTCH5 SER, 30", 1.5N, 316 SS, GB	GTCH531.5N2615GB
21262-11	FLTR HSG ASSY, GTCH5 SER, 40", 1.5N, 316 SS, GB, CODE	GTCH541.5N2615GBU
21262-12	FLTR HSG ASSY, GTCH5 SER, 40", 1.5N, 316 SS, GB	GTCH541.5N2615GB
21262-13	FLTR HSG ASSY, GTCH5 SER, 20", 1.5N, 304 SS, EP, CODE	GTCH521.5N2415EPU
21262-14	FLTR HSG ASSY, GTCH5 SER, 20", 1.5N, 304 SS, EP	GTCH521.5N2415EP
21262-15	FLTR HSG ASSY, GTCH5 SER, 30", 1.5N, 304 SS, EP, CODE	GTCH531.5N2415EPU
21262-16	FLTR HSG ASSY, GTCH5 SER, 30", 1.5N, 304 SS, EP	GTCH531.5N2415EP
21262-17	FLTR HSG ASSY, GTCH5 SER, 40", 1.5N, 304 SS, EP, CODE	GTCH541.5N2415EPU
21262-18	FLTR HSG ASSY, GTCH5 SER, 40", 1.5N, 304 SS, EP	GTCH541.5N2415EP
21262-19	FLTR HSG ASSY, GTCH5 SER, 20", 1.5N, 316 SS, EP, CODE	GTCH521.5N2615EPU
21262-20	FLTR HSG ASSY, GTCH5 SER, 20", 1.5N, 316 SS, EP	GTCH521.5N2615EP
21262-21	FLTR HSG ASSY, GTCH5 SER, 30", 1.5N, 316 SS, EP, CODE	GTCH531.5N2615EPU
21262-22	FLTR HSG ASSY, GTCH5 SER, 30", 1.5N, 316 SS, EP	GTCH531.5N2615EP
21262-23	FLTR HSG ASSY, GTCH5 SER, 40", 1.5N, 316 SS, EP, CODE	GTCH541.5N2615EPU
21262-24	FLTR HSG ASSY, GTCH5 SER, 40", 1.5N, 316 SS, EP	GTCH541.5N2615EP

SHIPPING WEIGHT AND SIZE MAY DIFFER FROM STATED VALUES DUE TO PALLETIZING AND QUANTITY CONSIDERATIONS		
VESSEL SIZE	BOXED WEIGHT (LBS)	BOX SIZE (INCHES)
GTCH52-		14 x 14 x 40
GTCH53-		14 x 14 x 50
GTCH54-		14 x 14 x 60

DIMENSIONS		
MODEL NO.	A (in)	B (in)
GTCH52-	38	34.6
GTCH53-	48	44.6
GTCH54-	58	54.6



REFERENCE ENGINEERING DRAWING 21262

				GLOBAL FILTER LLC TITLE: FLTR HSG ASSY, 1.5" FNPT SISO GTCH5 SER, TAB	
		MATERIAL SEE TABULATION TABLE			
		FINISH SEE TABULATION TABLE		SIZE	DWG. NO.
A	EC200324-01			B	CS236
REV	EC NUMBER	NAME	DATE		REV
		DRAWN BY	ME	3-24-20	A
EC HISTORY		ENG APPR.	EG	3-25-20	SCALE: 1:6
				WEIGHT: 61 lbs.	SHEET 1 OF 3

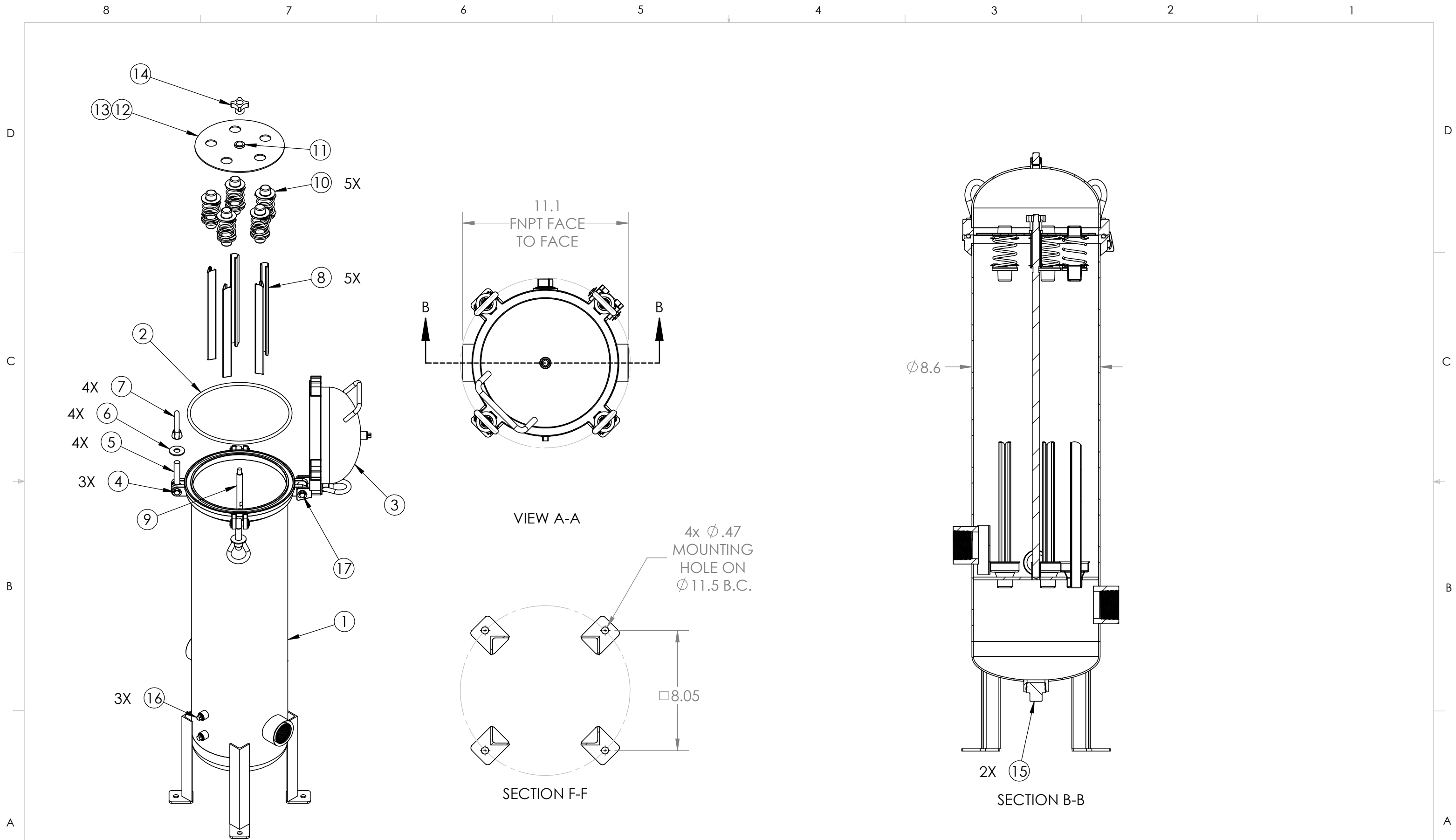
PROPRIETARY AND CONFIDENTIAL
 THE INFORMATION CONTAINED IN THIS DRAWING IS THE SOLE PROPERTY OF GLOBAL FILTER LLC. ANY REPRODUCTION IN PART OR AS A WHOLE WITHOUT THE WRITTEN PERMISSION OF GLOBAL FILTER LLC IS PROHIBITED.

- NOTES:
- UNLESS TOLERANCES ARE INDICATED, ALL DIMENSIONS ARE REFERENCE.
 - SEE SHEET 2 FOR BILL OF MATERIALS.
 - ALL MODELS COMPLY WITH REQUIREMENTS FOR DESIGN AND CONSTRUCTION IN ACCORDANCE WITH THE ASME BOILER & PRESSURE VESSEL CODE, SECTION VIII, DIVISION 1. MODELS BEARING THE "U" OR "UM" STAMP ARE REGISTERED WITH THE NATIONAL BOARD OF BOILER AND PRESSURE VESSEL INSPECTORS.

BILL OF MATERIALS

ITEM	DESCRIPTION	21262-xx																							
		-01 QTY	-02 QTY	-03 QTY	-04 QTY	-05 QTY	-06 QTY	-07 QTY	-08 QTY	-09 QTY	-10 QTY	-11 QTY	-12 QTY	-13 QTY	-14 QTY	-15 QTY	-16 QTY	-17 QTY	-18 QTY	-19 QTY	-20 QTY	-21 QTY	-22 QTY	-23 QTY	-24 QTY
D 1	FLTR HSG WLDMNT, 1.5" FNPT SISO GTCH5 SER, 20" 304 SS	1	1											1	1										
	FLTR HSG WLDMNT, 1.5" FNPT SISO GTCH5 SER, 30" 304 SS			1	1											1	1								
	FLTR HSG WLDMNT, 1.5" FNPT SISO GTCH5 SER, 40" 304 SS					1	1											1	1						
	FLTR HSG WLDMNT, 1.5" FNPT SISO GTCH5 SER, 20" 316 SS							1	1											1	1				
	FLTR HSG WLDMNT, 1.5" FNPT SISO GTCH5 SER, 30" 316 SS									1	1											1	1		
	FLTR HSG WLDMNT, 1.5" FNPT SISO GTCH5 SER, 40" 316 SS											1	1											1	1
2	O-RING, METRIC 224 ID X 7 CS, NITRILE	1	1	1	1	1	1	1	1	1	1	1	1	1	1	1	1	1	1	1	1	1	1	1	
3	LID WELDMENT, GTCH5 SERIES, 304 SS	1	1	1	1	1	1							1	1	1	1	1	1						
	LID WELDMENT, GTCH5 SERIES, 316 SS							1	1	1	1	1	1							1	1	1	1	1	
4	KIT, CLEVIS PEN w/ RETAINING RINGS, 15/32 x 1.75"	2	2	2	2	2	2	2	2	2	2	2	2	2	2	2	2	2	2	2	2	2	2	2	
5	EYE BOLT, 5/8"	4	4	4	4	4	4	4	4	4	4	4	4	4	4	4	4	4	4	4	4	4	4	4	
6	WASHER, FLAT, SS	4	4	4	4	4	4	4	4	4	4	4	4	4	4	4	4	4	4	4	4	4	4	4	
7	EYE NUT, 5/8"-11	4	4	4	4	4	4	4	4	4	4	4	4	4	4	4	4	4	4	4	4	4	4	4	
C 8	V-POST, GTCHB SERIES, 20", 304 SS	5	5											5	5										
	V-POST, GTCHB SERIES, 30", 304 SS			5	5											5	5								
	V-POST, GTCHB SERIES, 40", 304 SS					5	5											5	5						
	V-POST, GTCHB SERIES, 20", 316 SS							5	5											5	5				
	V-POST, GTCHB SERIES, 30", 316 SS									5	5											5	5		
	V-POST, GTCHB SERIES, 40", 316 SS											5	5										5	5	
9	TIE ROD, GTCH SERIES, 20", 304 SS	1	1											1	1										
	TIE ROD, GTCH SERIES, 30", 304 SS			1	1											1	1								
	TIE ROD, GTCH SERIES, 40", 304 SS					1	1											1	1						
	TIE ROD, GTCH SERIES, 20", 316 SS							1	1											1	1				
	TIE ROD, GTCH SERIES, 30", 316 SS									1	1											1	1		
	TIE ROD, GTCH SERIES, 40", 316 SS											1	1										1	1	
B 10	SPRING ASSEMBLY, CARTRIDGE VESSELS, 304 SS	5	5	5	5	5	5							5	5	5	5	5	5						
	SPRING ASSEMBLY, CARTRIDGE VESSELS, 316 SS							5	5	5	5	5	5							5	5	5	5	5	
11	HOLD DOWN PLT POST w/ EXT RET RINGS KIT, 304 SS	1	1	1	1	1	1							1	1	1	1	1	1						
	HOLD DOWN PLT POST w/ EXT RET RINGS KIT, 316 SS							1	1	1	1	1	1							1	1	1	1	1	
12	HOLD DOWN PLT, CLOSED & DOE, GTCH5 SER, 304 SS	1	1	1	1	1	1							1	1	1	1	1	1						
	HOLD DOWN PLT, CLOSED & DOE, GTCH5 SER, 316 SS							1	1	1	1	1	1							1	1	1	1	1	
13	HOLD DOWN FIN CTG, GTCH5 SER, 304 SS	1	1	1	1	1	1							1	1	1	1	1	1						
	HOLD DOWN FIN CTG, GTCH5 SER, 316 SS							1	1	1	1	1	1							1	1	1	1	1	
14	TIE ROD NUT, GTCHB SERIES, 304 SS	1	1	1	1	1	1							1	1	1	1	1	1						
	TIE ROD NUT, GTCHB SERIES, 316 SS							1	1	1	1	1	1							1	1	1	1	1	
15	PIPE PLUG, 1" HEX HEAD, 304 SS	2	2	2	2	2	2							2	2	2	2	2	2						
	PIPE PLUG, 1" HEX HEAD, 316 SS							2	2	2	2	2	2							2	2	2	2	2	
16	PIPE PLUG, 1/4" HEX HEAD, 304 SS	3	3	3	3	3	3							3	3	3	3	3	3						
	PIPE PLUG, 1/4" HEX HEAD, 316 SS							3	3	3	3	3	3							3	3	3	3	3	
A 17	KIT, CLEVIS PEN w/ RETAINING RINGS, 15-32 x 2.50"	1	1	1	1	1	1	1	1	1	1	1	1	1	1	1	1	1	1	1	1	1	1	1	

SIZE B	DWG. NO. CS236	REV A
SCALE: 1:1	WEIGHT:	SHEET 2 OF 3



SCALE 1 : 6

SIZE B	DWG. NO. CS236	REV A
SCALE: 1:6	WEIGHT:	SHEET 3 OF 3