

TABULATION			
PART NO.	DESCRIPTION	GLOBAL FILTER MODEL NO.	DIM A (SHT 3)
CS105-01	FLTR HSG ASSY, GTCHB12 SER 3" FLG, 20" 304 SS	GTCHB1223F2415PC	41.0
CS105-02	FLTR HSG ASSY, GTCHB12 SER 3" FLG, 30" 304 SS	GTCHB1233F2415PC	51.0
CS105-03	FLTR HSG ASSY, GTCHB12 SER 3" FLG, 40" 304 SS	GTCHB1243F2415PC	61.0
CS105-04	FLTR HSG ASSY, GTCHB12 SER 3" FLG, 20" 316 SS	GTCHB1223F2615PC	41.0
CS105-05	FLTR HSG ASSY, GTCHB12 SER 3" FLG, 30" 316 SS	GTCHB1233F2615PC	51.0
CS105-06	FLTR HSG ASSY, GTCHB12 SER 3" FLG, 40" 316 SS	GTCHB1243F2615PC	61.0

SHIPPING WEIGHT AND SIZE MAY DIFFER FROM STATED VALUES DUE TO PALLETIZING AND QUANTITY CONSIDERATIONS

VESSEL SIZE	BOXED WEIGHT (LBS)	BOX SIZE (INCHES)
20"	117	19 x 20 x 48
30"	164	45 x 45 x 57
40"	175	45 x 45 x 65

NOTES:
 1. SEE SHEET 2 FOR BILL OF MATERIALS.
 2. UNLESS TOLERANCES ARE INDICATED, ALL DIMENSIONS ARE REFERENCE.

PROPRIETARY AND CONFIDENTIAL
 THE INFORMATION CONTAINED IN THIS DRAWING IS THE SOLE PROPERTY OF GLOBAL FILTER LLC. ANY REPRODUCTION IN PART OR AS A WHOLE WITHOUT THE WRITTEN PERMISSION OF GLOBAL FILTER LLC IS PROHIBITED.

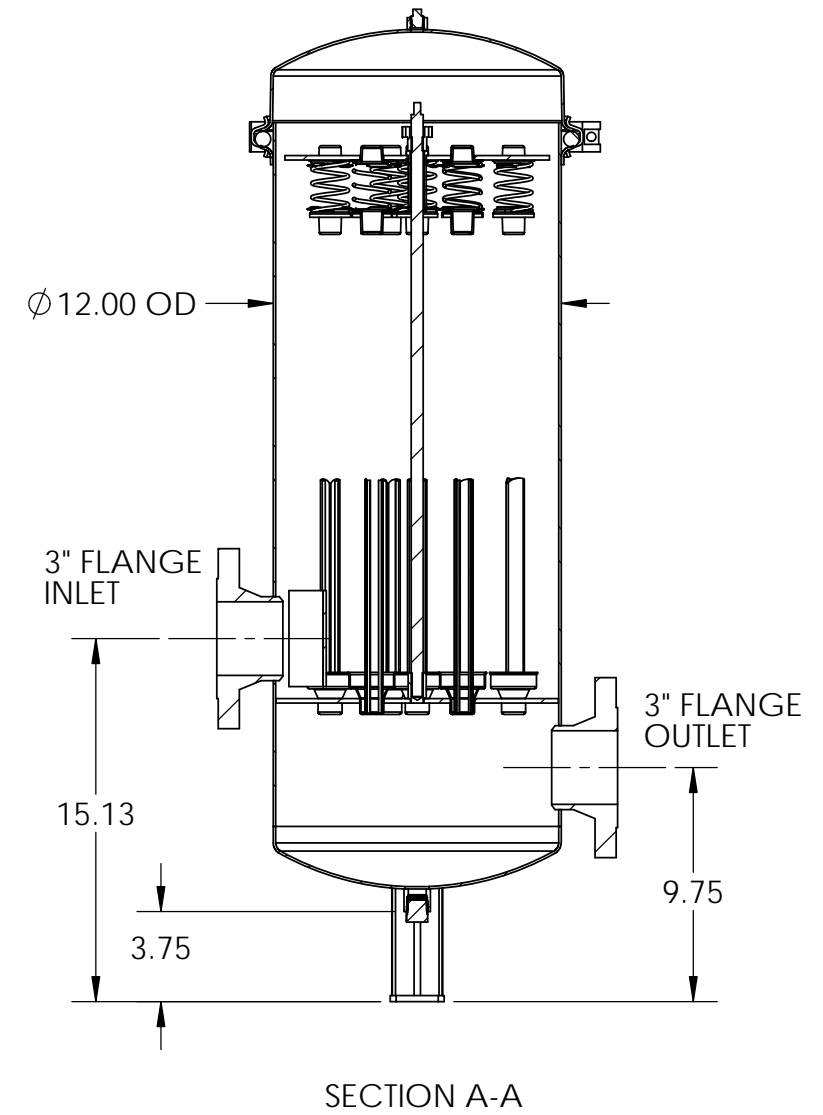
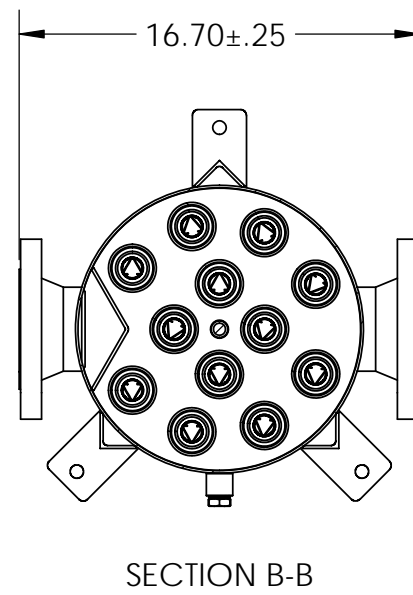
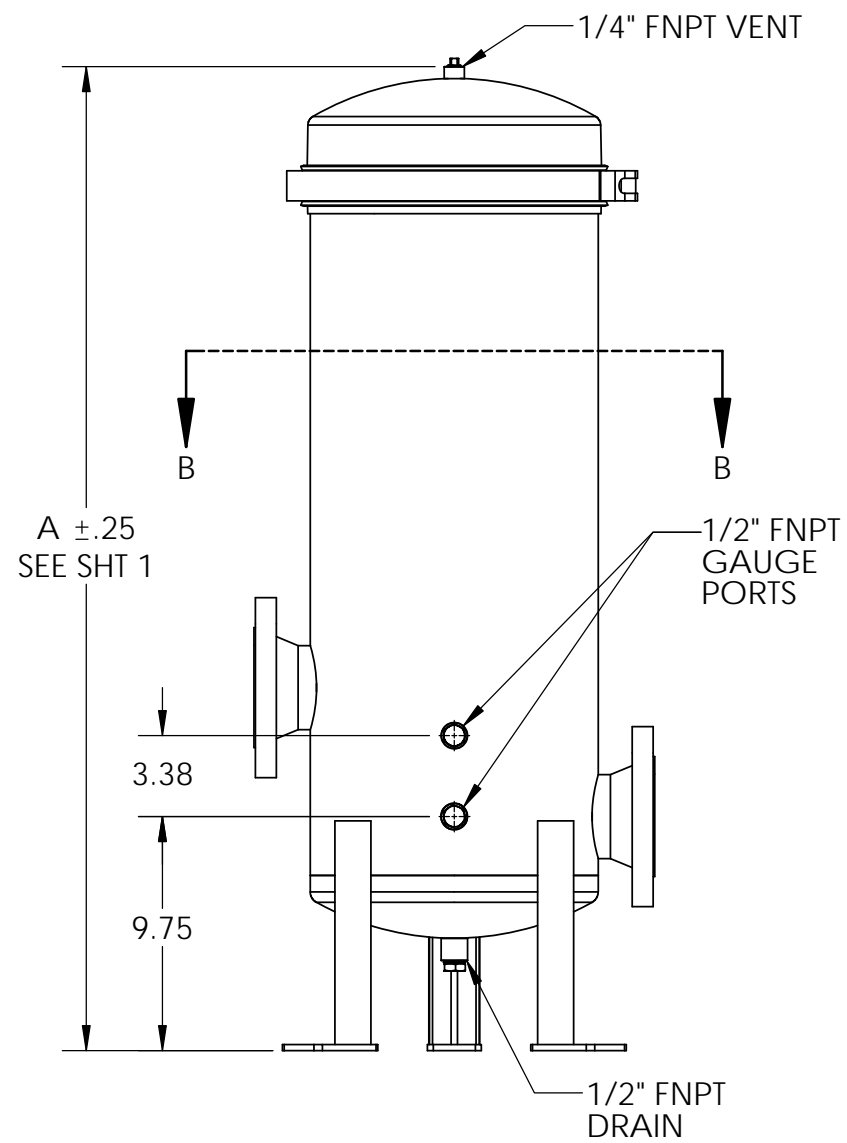
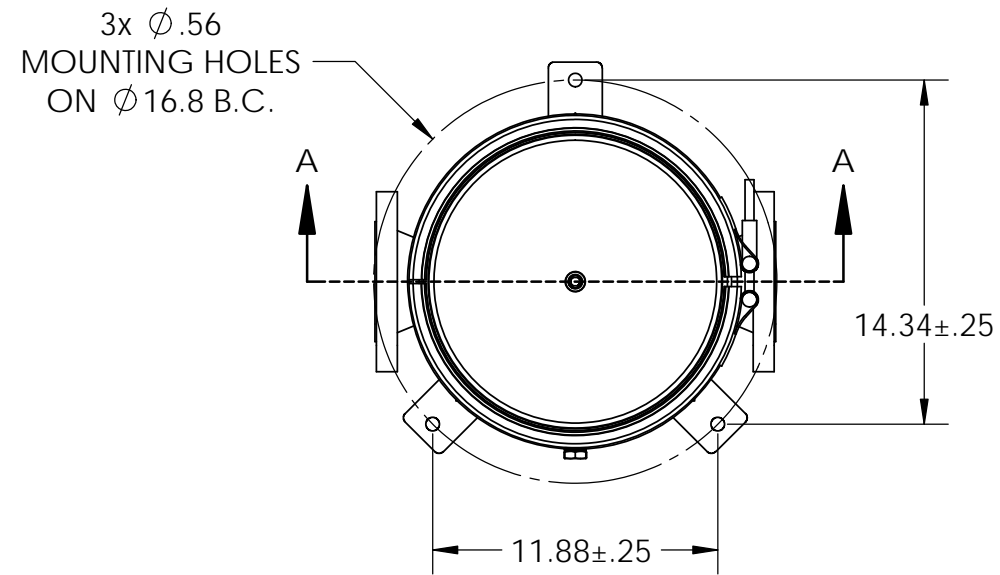
REFERENCE ENGINEERING DRAWING 21125

B		EC160609-01		MATERIAL		GLOBAL FILTER LLC TITLE: FLTR HSG ASSY, 3" FLG SISO GTCHB12 SER, TAB		
A		EC150219-02		FINISH				
REV	EC NUMBER		DRAWN BY	NAME	DATE	SIZE	DWG. NO.	REV
EC HISTORY			ENG APPR.	EG	3-9-15	B	CS105	B
			SCALE: 1:12		WEIGHT:		SHEET 1 OF 3	

BILL OF MATERIALS

ITEM	DESCRIPTION	CS105-xx					
		-01 QTY	-02 QTY	-03 QTY	-04 QTY	-05 QTY	-06 QTY
1	WELDMENT, FILTER HSG, GTCHB12 RND 304 SS, 20"	1					
	WELDMENT, FILTER HSG, GTCHB12 RND 304 SS, 30"		1				
	WELDMENT, FILTER HSG, GTCHB12 RND 304 SS, 40"			1			
	WELDMENT, FILTER HSG, GTCHB12 RND 316 SS, 20"				1		
	WELDMENT, FILTER HSG, GTCHB12 RND 316 SS, 30"					1	
	WELDMENT, FILTER HSG, GTCHB12 RND 316 SS, 40"						1
2	V POST, GTCHB SERIES, 20" 304 SS	12					
	V POST, GTCHB SERIES, 30" 304 SS		12				
	V POST, GTCHB SERIES, 40" 304 SS			12			
	V POST, GTCHB SERIES, 20" 316 SS				12		
	V POST, GTCHB SERIES, 30" 316 SS					12	
	V POST, GTCHB SERIES, 40" 316 SS						12
3	TIE ROD, GTCHB SERIES, 20" 304 SS	1					
	TIE ROD, GTCHB SERIES, 30" 304 SS		1				
	TIE ROD, GTCHB SERIES, 40" 304 SS			1			
	TIE ROD, GTCHB SERIES, 20" 316 SS				1		
	TIE ROD, GTCHB SERIES, 30" 316 SS					1	
	TIE ROD, GTCHB SERIES, 40" 316 SS						1
4	HOLD DOWN PLATE, GTCHB12, 304 SS	1	1	1			
	HOLD DOWN PLATE, GTCHB12, 316 SS				1	1	1
5	HOLD DOWN PLATE POST W/ EXT RET RING KIT, 304 SS	1	1	1			
	HOLD DOWN PLATE POST W/ EXT RET RING KIT, 316 SS				1	1	1
6	SPRING ASSEMBLY, CARTRIDGE VESSELS, 304 SS	1	1	1			
	SPRING ASSEMBLY, CARTRIDGE VESSELS, 316 SS				1	1	1
7	TIE ROD NUT, GTCHB SERIES, 304 SS	1	1	1			
	TIE ROD NUT, GTCHB SERIES, 316 SS				1	1	1
8	O-RING, 299mm ID 16mm CS, BUNA	1	1	1	1	1	1
9	LID WELDMENT, GTCHB12 Series, 304 SS	1	1	1			
	LID WELDMENT, GTCHB12 Series, 316 SS				1	1	1
10	V-BAND CLAMP, GTCHB SERIES, 12 RND	1	1	1	1	1	1
11	PIPE PLUG, 1/2", HEX HEAD, 304 SS	3	3	3			
	PIPE PLUG, 1/2", HEX HEAD, 316 SS				3	3	3
12	PIPE PLUG, 1/4", HEX HEAD, 304 SS	1	1	1			
	PIPE PLUG, 1/4", HEX HEAD, 316 SS				1	1	1

SIZE B	DWG. NO. CS105	REV B
SCALE: 1:1	WEIGHT:	SHEET 2 OF 3



SIZE B	DWG. NO. CS105	REV B
SCALE: 1:8	WEIGHT:	SHEET 3 OF 3