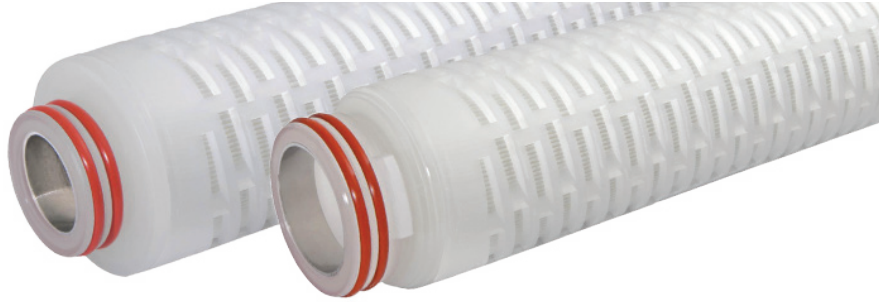
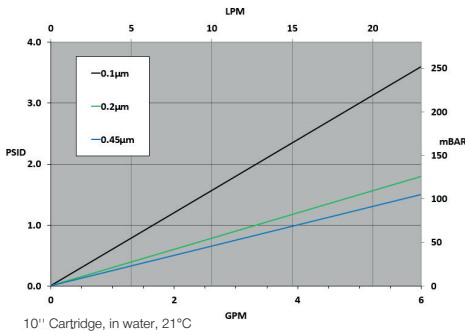


GGPTFE-Series General Grade PTFE

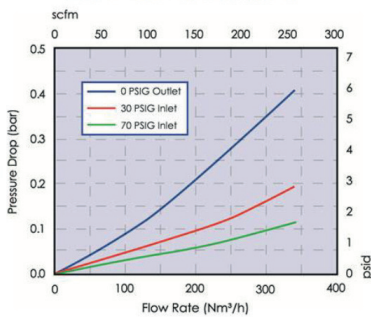
GGPTFE-Series High Purity General Grade PTFE Filter Cartridges, with expanded polytetrafluoroethylene (PTFE) membrane, provide superior chemical resistance for a broad range of industrial applications. With retention ratings as fine as 0,1µ (100 nanometers), consistent contaminant removal is achieved in aggressive fluids and organic solvents. In air/gas/vent applications, the single-layer PTFE membrane delivers superior hydrophobicity versus polypropylene or PVDF; offering a superior option to preclude water wetting and associated diminished flow. Manufactured in a clean-room environment to maintain high standards of purity and cleanliness.



Flow Rate vs Pressure Drop



GGPTFE 0.2µm, 10" L, Type 7



Construction Materials

Membrane.....PTFE
Support Media.....Polypropylene
End Caps.....Polypropylene
Center Core.....Polypropylene
Outer Support Cage.....Polypropylene
O-Rings/Gaskets.....Buna, EPDM, Silicone, FKM
 EPDM, FEP FKM, FEP Silicone, PTFE (DOE)

Sanitization / Sterilization

Filtered Hot Water.....80°C for 30 min.
Steam Sterilization.....121°C for 30 min., multiple cycles

Chemicals: Cartridges are compatible with most chemical sanitizing agents.

Note: Stainless steel insert option required for all cartridges being hot water sanitized or steam sterilized for 222 or 226 endcaps.

Toxicity

All polypropylene components meet the specifications for biological safety per USP Class VI – 121°C for plastics.

Dimensions

Length:
10 to 40 inches (25,4 to 101,6 cm) nominal
Outside Diameter:
7,0 cm, nominal

Operating Conditions

Change Out ΔP (recommended).....2,4 bar
Temperature (max).....80°C
Differential Pressure (max).....3,4 bar at 20°C

Typical Applications

- Aggressive Fluids
- Fermentation Feed Air
- Venting
- Photoresists
- Inert gases

Food Safety Compliance

Materials of construction comply with FDA regulations for food and beverage contact use as detailed in the US Code of Federal Regulations, 21CFR. Materials used to produce filter media and hardware are deemed safe for use in contact with foodstuffs in accordance with EU Directives 1935/2004 and/or 10/2011.

Ordering Information

GGPTFE	Rating (µ)	A	Length	C	End Cap Style	O-Rings/Gaskets	-	Adders
	0,1		10" (25,4 cm)		2 = DOE Flat Gasket ¹	B = Buna		CS = 316SS Compression Spring
	0,2		20" (50,8 cm)		3 = 222 w/ Fin	E = EPDM		I = Stainless Steel Insert
			30" (76,2 cm)		4 = 222 w/ Flat Cap	S = Silicone		
			40" (101,6 cm)		6 = 226 w/ Flat Cap	Z = FEP Silicone		
					7 = 226 w/ Fin	V = FKM		
					16 = 213 Internal O-Ring	T = FEP FKM		
					28 = 222 3-tabs w/ Fin	(if O-ring and PTFE if DOE)		

¹For other sizes, refer to the performance guide.
¹If code 2 (DOE) is applied, option Z is not available.

DISCLAIMER: Filtration data presented is representative of performance observed in controlled laboratory testing. It is not given as a warranty, specification or statement of fitness for use. Specific performance can vary widely depending on contaminant type, fluid properties, flow rates and environmental conditions. It is recommended that users conduct thorough qualification testing to assure the product functions as required. For additional technical support, a product Performance Guide is available upon request.