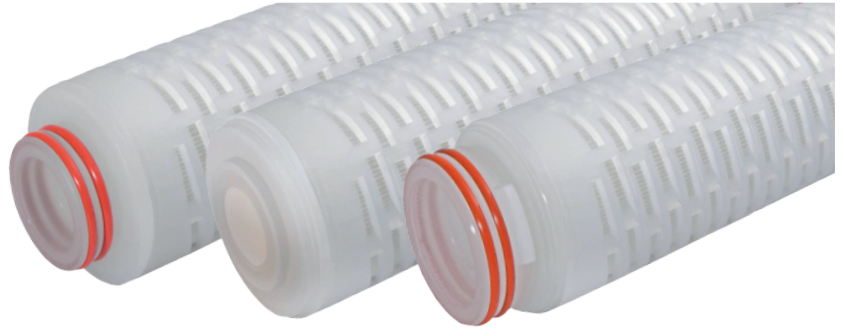
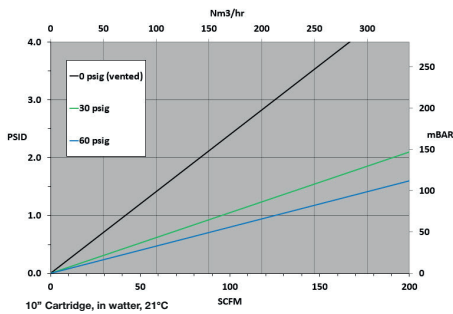


# PPTFE-Series Pharmaceutical Grade PTFE

PPTFE-Series High Purity Pharmaceutical Grade PTFE Filter Cartridges, with expanded polytetrafluoroethylene (PTFE) membrane, provide optimized filtration performance in sterile air/gas filtration and venting applications. The single layer PTFE membrane, with over twice the hydrophobicity of polypropylene or PVDF, is the best choice to prevent water intrusion and resulting microbial growth. Each PPTFE cartridge is integrity tested during manufacturing and is supported by a validation guide for regulatory compliance. PPTFE elements are fully validated as sterilizing grade filters in liquids in accordance with HIMA and ASTM F838-05 guidelines and in gases through full retention of the MS2 phage in an aerosol challenge. Manufactured in a clean-room environment to maintain high standards of purity and cleanliness.



### Flow Rate vs Pressure Drop



### Construction Materials

**Membrane**.....PTFE  
**Prefiltration Media**.....Polypropylene  
**Support Media**.....Polypropylene  
**Cage/Core/Adapters**.....Polypropylene  
**O-Rings/Gaskets**.....Buna, EPDM, Silicone, FKM, FEP FKM, FEP Silicone

### Dimensions

**Length**.....12.7 to 101.6 cm  
**Outside Diameter**.....7.06 cm

### Operating Conditions

**Change Out ΔP (recommended)**.....2.4 bar  
**Temperature (max)**.....120°C  
**Differential Pressure (max)**.....5 bar at 20°C

### Sanitization/Sterilization

**Filtered Hot Water**.....85°-95°C for 30 min.  
max ΔP 0.5 bar  
**Steam Sterilization**.....134°C for 30 min.,  
max ΔP 0.5 bar, 150 cycles

### Toxicity

All polypropylene components meet the specifications for biological safety per USP Class VI – 121°C for plastics.

**Note:** O-ring adapters include integral reinforcement that will not deform with repeated steam sterilization or hot water sanitation cycles.

### Food Safety Compliance

Materials of construction comply with FDA regulations for food and beverage contact use as detailed in the US Code of Federal Regulations, 21CFR. Materials used to produce filter media and hardware are deemed safe for use in contact with foodstuffs in accordance with EU Directives 1935/2004 and/or 10/2011.

### Typical Applications

- Sterile gas filtration of fermentor inlets
- Off-gassing downstream of fermentors and bioreactors
- Autoclave vent filters
- WFI tank vents
- Sterile air supply for service gases (i.e. filling lines in blow-fill-seal systems)

### Ordering Information

PPTFE	Rating (μ)	A	Length	C	End Cap Style	O-Rings/Gaskets
	0.2		5" (12.7 cm)		2 = DOE Flat Gasket*	B = Buna-N
			10" (25.4 cm)		3 = 222 w/Fin	E = EPDM
			20" (50.8 cm)		4 = 222 w/Flat Cap	S = Silicone
			30" (76.2 cm)		6 = 226 w/Flat Cap	T = FEP FKM
			40" (101.6 cm)		7 = 226 w/Fin	V = FKM
					28 = 222 3-Tabs w/ Fin	Z = FEP Silicone

\*If code 2 (DOE) is applied, options T and Z are not available.

DISCLAIMER: Filtration data presented is representative of performance observed in controlled laboratory testing. It is not given as a warranty, specification or statement of fitness for use. Specific performance can vary widely depending on contaminant type, fluid properties, flow rates and environmental conditions. It is recommended that users conduct thorough qualification testing to assure the product functions as required. For additional technical support, a product Performance Guide is available upon request.